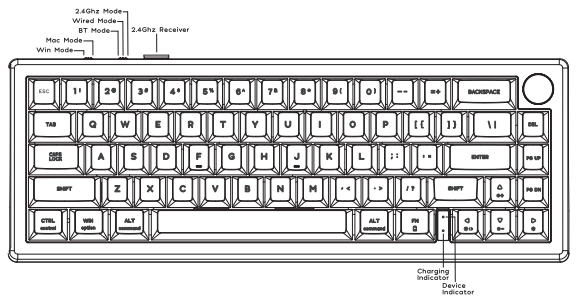




BOYI



GMK67 PRO

Tri-Mode VIA/QMK Mechanical Kit Keyboard

Made In China

Thank you for purchasing our BOYI GMK67 Pro (QMK- 67KEY) mechanical keyboard. We hope you will be pleased with both the product and service you received. The following is a detailed introduction of the functions and operation method of this product.

LED Setting Keys

FN+	Switch Different RGB Mode
FN+[{	Backlight Saturation+
FN+}]	Backlight Saturation-
FN+→	Backlight Speed+
FN+←	Backlight Speed-
FN+↑	Backlight Brightness+
FN+↓	Backlight Brightness-

Knob Function

Volume adjust, turn counter clockwise is volume down, rotate clockwise is volume up, press one time to mute.

Power Indication:

Under wireless status: FN+SHIFT-R Display power query
Keyboard digits 1~0 are always lit to show the power percentage.
Power query: (1~0) each light represents 10% of the power; battery above 60% LED lights green (including 60%), 30%-60% lights yellow (including 30%), below 30% lights red

Low battery indicator: Battery voltage is lower than 3.3V, the second indicator next to the FN red light flashes slowly, the backlight is off, prompting the need to charge, timely charging to avoid affecting normal work

Charging indicator light red light is always on, when full of green light

FN Combination Keys

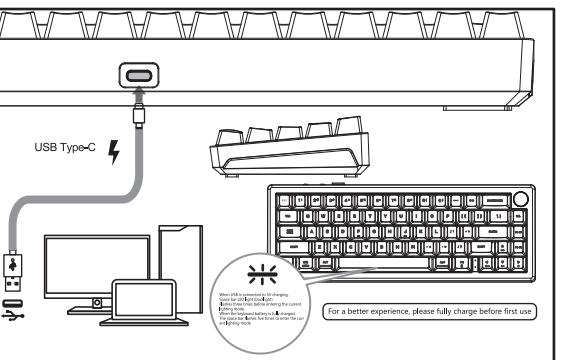
FN Combination Keys	WIN OS Mode	MAC OS Mode
FN+ ESC	,	,
FN+ !@	F1	Screen Brightness-
FN+ 2@	F2	Screen Brightness +
FN+ 3#	F3	Task
FN+ 4\$	F4	Control Pad
FN+ 5%	F5	F5
FN+ 6^	F6	F6
FN+ 7&	F7	Previous Track
FN+ 8*	F8	Play/Pause
FN+ 9(F9	Next Track
FN+ 0)	F10	Mute
FN+ -	F11	Volume
FN+ =+	F12	Volume+
FN+ DEL	INSERT	N/A
FN+PGUP	HOME	HOME
FN+ PGDN	END	END
SHIFT+ESC	~	~
FN+WIN	Win lock	N/A
FN+	Switch Different RGB Mode	Switch Different RGB Mode
FN+BACKSPACE	Long press for 3 seconds to reset the keyboard to the factory setting	Long press for 3 seconds to reset the keyboard to the factory setting

QMK- 67KEY Triple Mode Connection

USB Wired Mode

Please toggle the mode switch to the middle wired mode, and then insert USB cable into your computer, the keyboard backlight lights on and turns to the default of RGB backlight effect, it means connection successful.

Wired mode and charging



Bluetooth Pairing Instructions: FN+Q/W/E

1.Please toggle the mode switch to the Bluetooth mode
2.**Long press** FN + Q/W/E for 3~5 seconds to enter pairing mode. At this time, the device indicator flashes red/green/blue color quickly.

3.Open the Bluetooth settings on your device and scan for available devices. Locate and select the " BT Keyboard " entry.

4. Once the keyboard has connected to your device, the indicator will cease flashing, indicating that Bluetooth pairing was successful. Short press "FN" and "Q" or "FN" and "W" or "FN" and "E" keys to switch paired Bluetooth device.

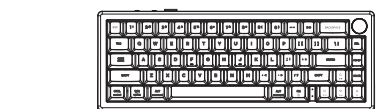
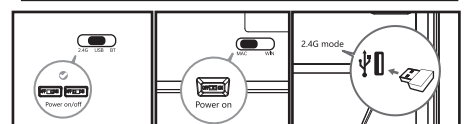
2.4Ghz Wireless Connection :FN+R

1.Please toggle the mode switch to 2.4Ghz mode

2.Plug in the receiver into your device .The device indicator is white color when the keyboard is under 2.4G mode .

3.**Long press** FN+R key enter 2.4g pairing mode . At this time, the device indicator flashes white color quickly. After the connection is successful, the device indicator stops blinking and goes to steady white color

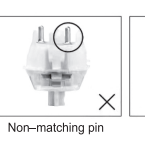
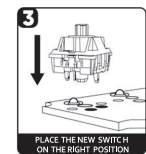
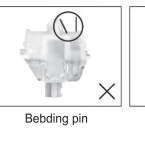
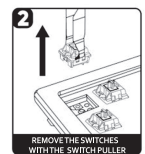
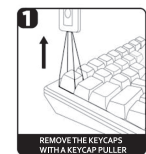
Bluetooth/2.4G connection



1 Bluetooth mode: FN+Q, W, E short press to Switch Bluetooth Mode: FN+Q, W, E any key Long press for 3-5 Seconds, the LED indicator Pairing Mode

2 2.4G mode: FN+P short press to switch 2.4G mode: FN+P long press for 3-5 seconds, P key LED indicator Pairing Mode

HOW TO REPLACE SWITCHES?



Switch Requirement:

It's compatible with almost 3 pin or 5 pin mechanical switches. But this kit only suitable for mechanical switch and not suitable for optical switch.

If you have any issues, please feel free to contact us at the mailbox: boyiservice2020@163.com ☺

How to use GMK67Pro VIA/QMK Software Driver?

Step 1:

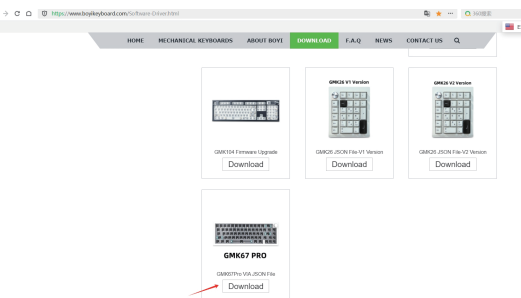
Open the link with Google Chrome: <https://usevia.app/#/design>

Step 2:

Please visit the official BOYI website:

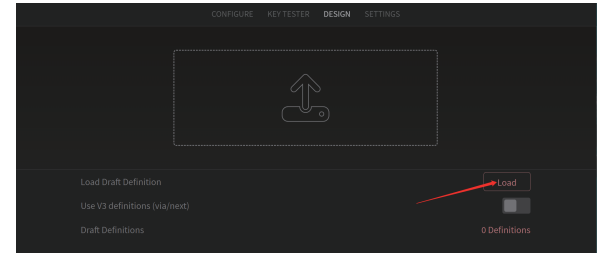
<https://www.boyikeyboard.com/Download.htm>

Download the GMK67Pro VIA JSON File



Step 3:

In the "DESIGN" interface, click "Load" to import the downloaded Json file.



Step 4:

Plug the keyboard into the USB cable and connect it to the computer, connect the GMK67Pro device and the corresponding keyboard interface will appear for macro

