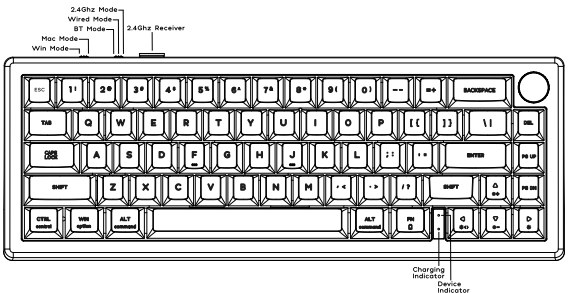




BOYI



GMK67 Mechanical keyboard

Made In China

Thank you for believing in BOYI GMK67 Mechanical Keyboard.Kit
In order fully understand and use this product, please read this
operation guide carefully.

RGB Backlighting and Animations:

FN + ↑	RGB backlight brightness Increase
FN + ↓	RGB backlight brightness decrease
FN + ←	Switch RGB dynamic backlight direction
FN + →	Switch RGB backlight color
FN + [{	RGB backlight speed decrease
FN +] }	RGB backlight speed increase
FN + \	Toggle different RGB backlighting modes totally 18 modes

Knob Function

Volume adjust, turn counterclockwise is volume down, rotate
clockwise is volume up, press one time to mute

FN Combination Keys

FN Combination Keys	WIN OS Mode	MAC OS Mode
FN+ ESC	`	`
FN+ 1!	F1	Screen Brightness -
FN+ 2@	F2	Screen Brightness +
FN+ 3#	F3	Task
FN+ 4\$	F4	Control Pad
FN+ 5%	F5	N/A
FN+ 6^	F6	N/A
FN+ 7&	F7	Previous Track
FN+ 8*	F8	Play/Pause
FN+ 9(F9	Next Track

FN+ 0)	F10	Mute
FN+ _=	F11	Volume-
FN+ +=	F12	Volume+
FN+ P	PAUSE	F15
FN+ O	SCROLL LOCK	F14
FN+ I	PRTSC	F13
FN+ DEL	INSERT	N/A
FN+ PGUP	HOME	HOME
FN+ PGDN	END	END
SHIFT+ESC	~	~
FN+WIN	Win lock	N/A
FN+BACKSPACE	Long press for 3 seconds to reset the keyboard to the factory setting	Long press for 3 seconds to reset the keyboard to the factory setting

BOYI GMK67 Software Driver-Remap Your GMK67 Kit

Step 1:

Please Visit: <https://www.boyikeyboard.com/Download.html>

Step 2:

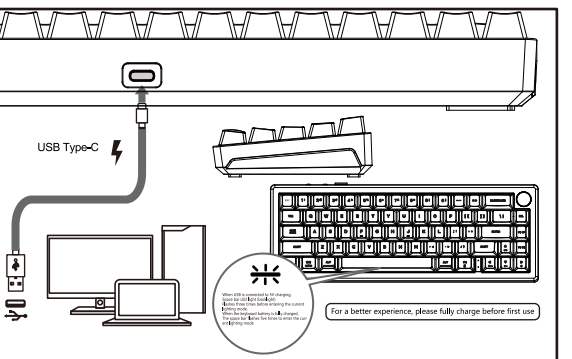
Download the File:BOYI GMK67 Software Driver

Toggle (Wired/BT5.0/2.4Ghz) and Pairing Method:

Wired Mode

Please toggle the mode switch to the middle wired mode, and then
insert USB cable into your computer, the keyboard backlight lights
on and turns to the default of RGB backlight effect, it means
connection successful.

Wired mode and charging



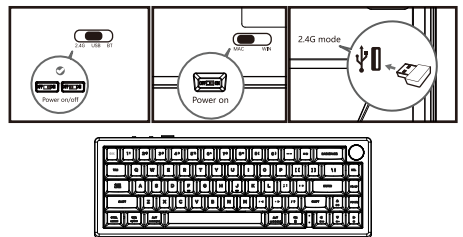
Bluetooth® Pairing Instructions:

- 1.Please toggle the mode switch to the Bluetooth mode
- 2.Long press FN + Q/W/E for 3~5 seconds to enter pairing mode.
At this time, the device indicator flashes red/green/blue color
quickly
- 3.Open the Bluetooth settings on your device and scan for available
devices. Locate and select the " BT Keyboard " entry.
4. Once the keyboard has connected to your device, the indicator
will cease flashing, indicating that Bluetooth pairing was successful.
Short press "FN" and "Q" or "FN" and "W" or "FN" and "E" keys to
switch paired Bluetooth device.

2.4Ghz Wireless Connection

- 1.Please toggle the mode switch to 2.4Ghz mode
- 2.Plug in the receiver into your device . The device indicator is
white color when the keyboard is under 2.4G mode .
- 3.Long press FN+R key enter 2.4g pairing mode . At this time,
the device indicator flashes white color quickly. After the
connection is successful, the device indicator stops blinking and
goes to steady white color

Bluetooth/2.4G connection



- 1 Bluetooth mode: FN+Q, W, E three groups of
any group of short press can be
Long press the LED indicator corresponding
to the FN+Q, W, E, Q, W, E buttons
- 2 2.4G mode: FN+P short press to switch 2.4G
mode.
FN+P long press for 3~4 seconds, P key LED
light into rapid blinking

Auto Sleep Mode

After 5 minutes without a keypress, the backlighting will turn off
to conserve battery. Any keypress will be awaken the keyboard.
After 30 minutes without a keypress, the keyboard will entry
deep sleep under Bluetooth mode, Bluetooth disconnect, any
keypress will reconnect the keyboard

Custom Lighting Effects of Game Mode Setting

FN+ Z

FPS Game—W/A/S/D/↑/↓/←/→

FN+ X

LOL Game—Q/W/E/R/D/G/F/B/V/L—Ctrl/L—Alt/Tab/Space/1-6/Esc

FN+ C

37keys Office Mode: A-Z 26keys/[/];/'/./,///↑/↓/←/→

Press FN+ Shift _left into the custom record . Continuous press
the same button to specify the color and then continue to set
other keys .Stored in accordance with FN+ Shift _left again .

Battery Charging:

FN key will blink red repeatedly when the keyboard is low on
battery (battery voltage less than 3.5V). It is always red light
when charging, it's turns to the green light after fully charged.

Device indicator lights:

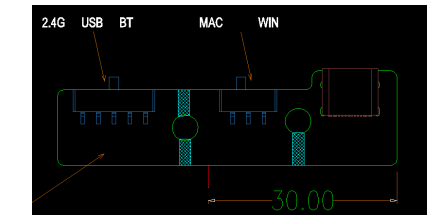
Red, green, and blue respectively represent Bluetooth device 123,
while white light is in 2.4G mode. The indicator light quickly flashes
to indicate the current mode code matching. (When the keyboard
code matching is performed, the corresponding device indicator
light flashes at a frequency of 3HZ to prompt. If the code matching
is not successful, it will stop flashing and restart with backlight after
flashing for 90 seconds.) The successful connection is a constant
light indicator

Charging indicator light:

When charging the keyboard after connecting the USB cable, the
charging indicator light will always light up in red, and when fully
charged, it will light up in green,
Low battery indicator light: When using wireless mode, the
keyboard voltage is insufficient, and the FN key flashes to prompt

Flip switch function:

Flip the switch to switch between wired, 2.4G, and Bluetooth
modes, and another switch to switch between MAC and WIN
system usage modes



Dear Friends,

Thanks for your purchase of our BOYI GMK67 Mechanical Gaming
Keyboard Kit!

Our BOYI GMK67 Kit will have 1 Year Warranty Service except for
humandamage factors. It is our pleasureto do business with you. If
you have any issues or concerns, please don't hesitate to contact us
by e-mail: (Boyiservice2020@163.com) for solution and we will do
ourbest to help you. For more BOYI Series Keyboard,please visit
BOYI Office Web:(<https://www.boyikeyboard.com/>). Wish you will
enjoy our BOYI Keyboard,Look forward to serving you again in the
near future!

Yours Sincerely,

BOYI Direct